

TYPE-6

GOLF VILLAS WITH

MEDITATION

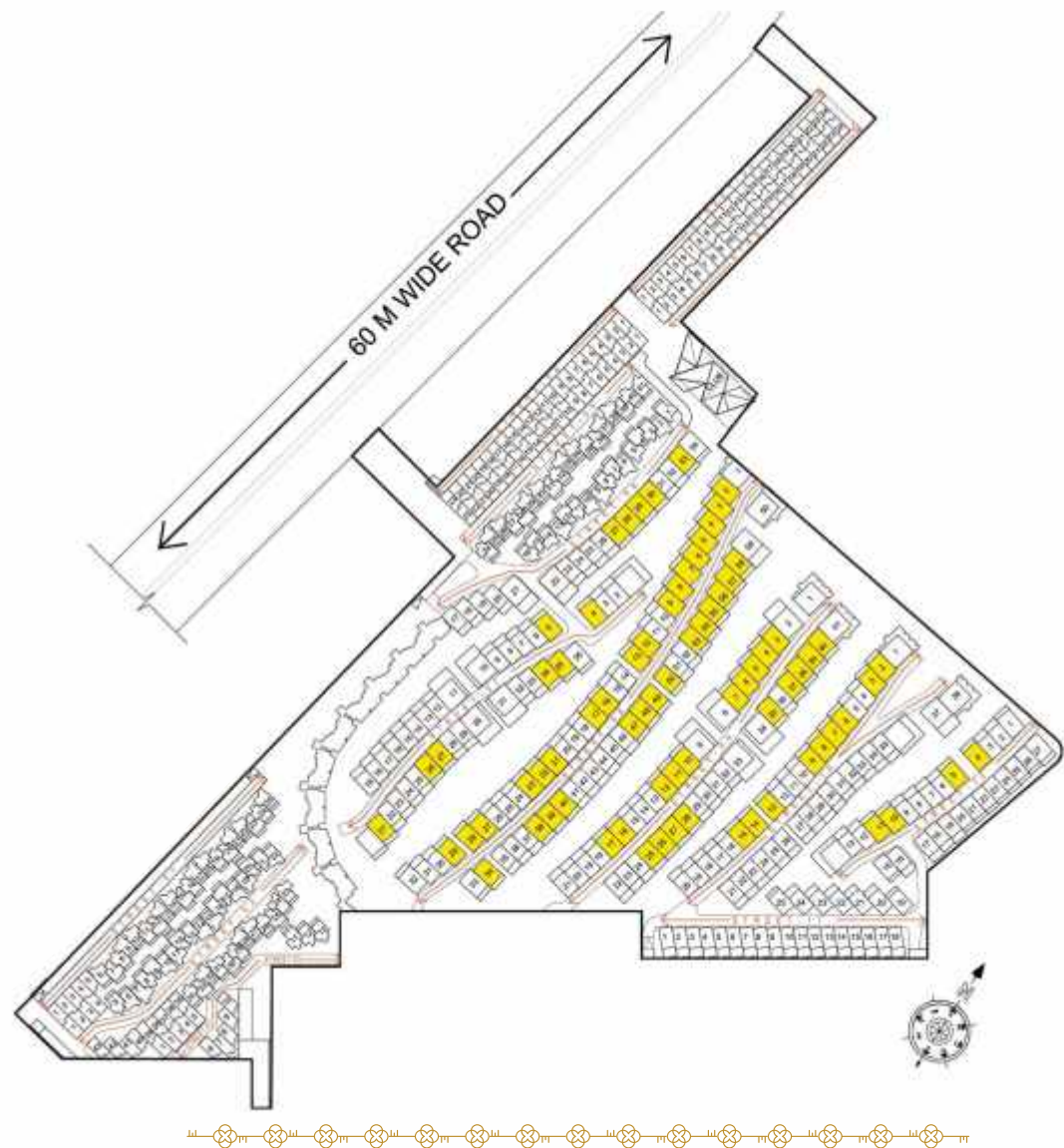
COURTS

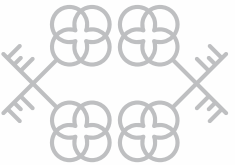
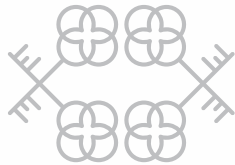
A VILLA INSPIRED BY CONTEMPORARY
COURTYARD LIVING CRAFTED BY MODERN LIFESTYLE.



KEY PLAN

| Name of Villa | Color | Location | | Plot Size | Carpet Area Exclusive Area of Basement (Including Parking Area) | Built-up Area | Exclusive Garden + Terrace Area | Total Area of Unit |
|---------------|-------|----------|--|-------------|--|------------------|---------------------------------------|--------------------------|
| | | Street | Villa Number | (In Sq.Yd.) | (In Sq.Ft.) | (In Sq.Ft.) | (In Sq.Ft.) | (In Sq.Ft.) |
| | | | | A | B | C | D | (C+D/2) |
| Type 6 | | ST - 06 | 28,29,30 | | | | | |
| | | ST - 07 | 04,05,21,26,27,32,33,34 | | | | | |
| | | ST - 08 | 02 to 08 | | | | | |
| | | | 15,20,21,22,26,27,28,33,36,37 44,45,46,52,53,54,55,56 | | | | | |
| | | ST - 09 | 03,04,05,07,10,11,12,16,17,31 32,35,37,38,39,40 | 248 | 4780 | 5800 | 1340 | 6470 |
| | | ST - 10 | 02,03,06,07,12 | | | | | |
| | | ST - 12 | 02,05 | | | | | |





Descriptions

- **The Villa has 5 levels with the following key features :**
5 bedrooms with attached dresser & toilet including a junior master bedroom & a master bedroom with master toilet & dresser, meditation garden, living & dining, kitchen with kitchen yard, powder room, party lounge / multipurpose hall, 3 car parking, lift, open-to-sky private pool, 1 utility, 2 maid’s room & toilet, powder room private lawn, semi covered Balinese style spa bed, show kitchen, creative loft, store & toilet

Upper Ground Floor

- Golf cart movement in the entire 90 acres enables safety for pedestrians with no vehicular movement on the ground floor, so that the kids & the elderly can roam around safely
- Resort like entrance foyer where a 80 sq.ft. of meditation garden with provision for oxygen wall inside your own villas
- View of the golf course through 440 sq.ft. of triple height living room which has a 13 ft. high & 22 ft wide floor flushed glazing facing towards the golf course
- 225 sq. ft. of elevated private garden stepping down through the landscaped staircase to your 310 sq.ft. of private pool, garden & party lounge
- As the luxury adds up, you also have framed wider views towards the golf course & the provision of private lift

Lower Ground Floor - Bachelor's Pad

- Splash your face in the mornings with the sparkling water in your open-to-sky swimming pool which is beside your 180 sq.ft. bedroom
- Sip a cocktail in your private bar in the 290 sq.ft. party lounge or sit on the deck dipping your feet in the swimming pool
- Private parking space for two cars inside your own plot line
- Proper maid’s room with a big utility, flexible for other services also



First Floor - The Junior’s Domain

- As you come on the upper level, the aroma of the meditation garden wraps takes over the bridge that take you to the destination
- The morning sunlight wakes you up in your 260 sq.ft. colossal junior master bedroom with a view towards the golf course from a floor flushed glazing
- The 200 sq.ft. bedrooms has floor flushed glazing offering a direct view of the golf course from your bed
- Enjoy your evenings in 6 ft. wide terraces in both the bedrooms

Second Floor - The Master's Domain

- The lift takes you to the next level of resort experience with a 800 sq.ft. Master suite
- Wake up in your 275 sq.ft. master bed with a golf course on one side & balcony on the other, providing proper light & cross ventilation
- The master toilet gives you an another world experience with a bathtub virtually in between the gardens & opens into your own master terrace

The Terrace You'll Love To Spend Time On

- The lift takes you to the creative loft on the terrace which has a 15 ft. high extraordinary framed view
- Enhance the creativity of your junior guitarist, the Kathak dancer in your house or the wonderful writer within you
- Terraces are unique with Balinese style spa bed on the roof top which is also convertible into performance platform in case of a small gathering
- Proper chef’s show kitchen along with a toilet planned purposely, to be used during a gathering or party
- Store on the terrace for keeping the soft furnishing safely in case of rain
- Pergolas shade the terrace, making the elevations dynamic & adding a vibrant look & feel by playful sun movement through out the day



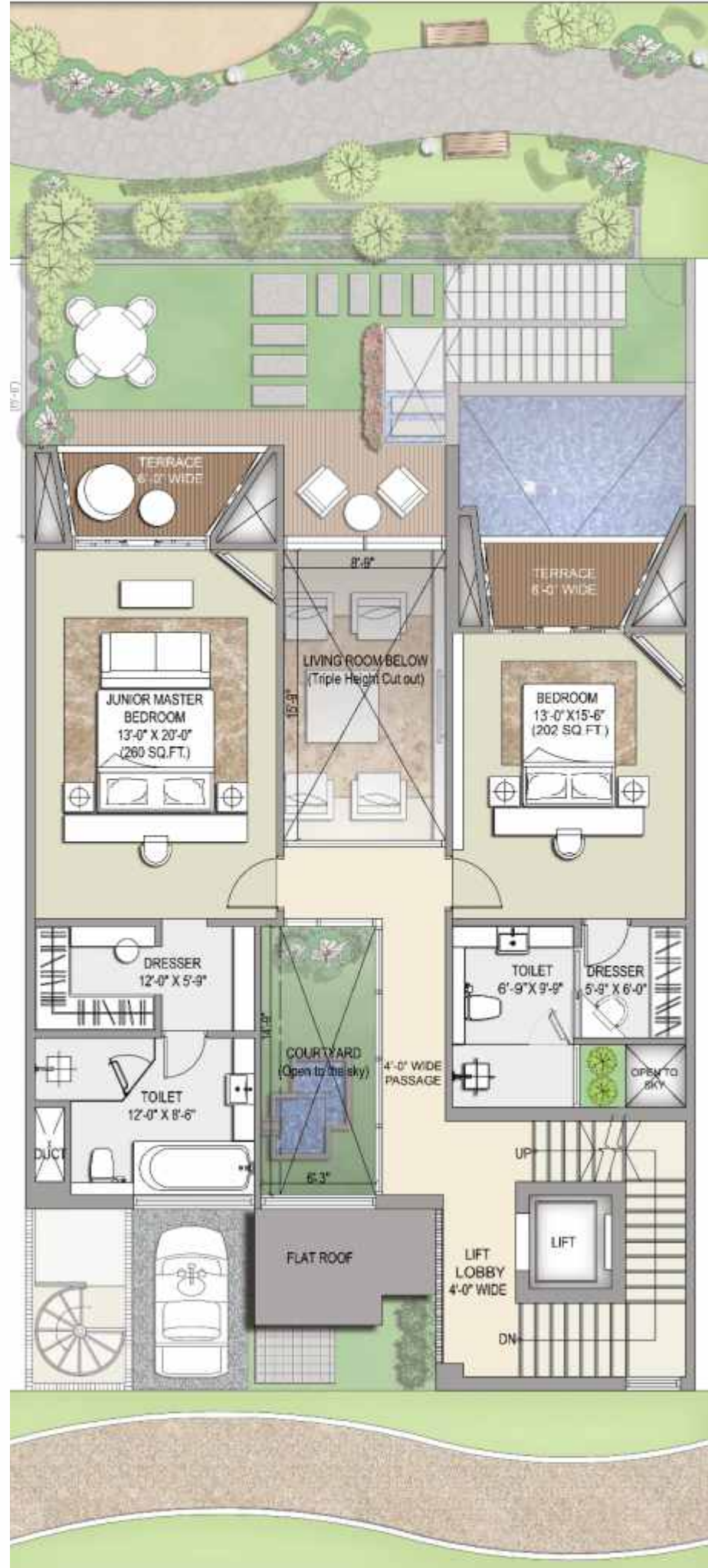
R I S E R E S O R T R E S I D E N C E S



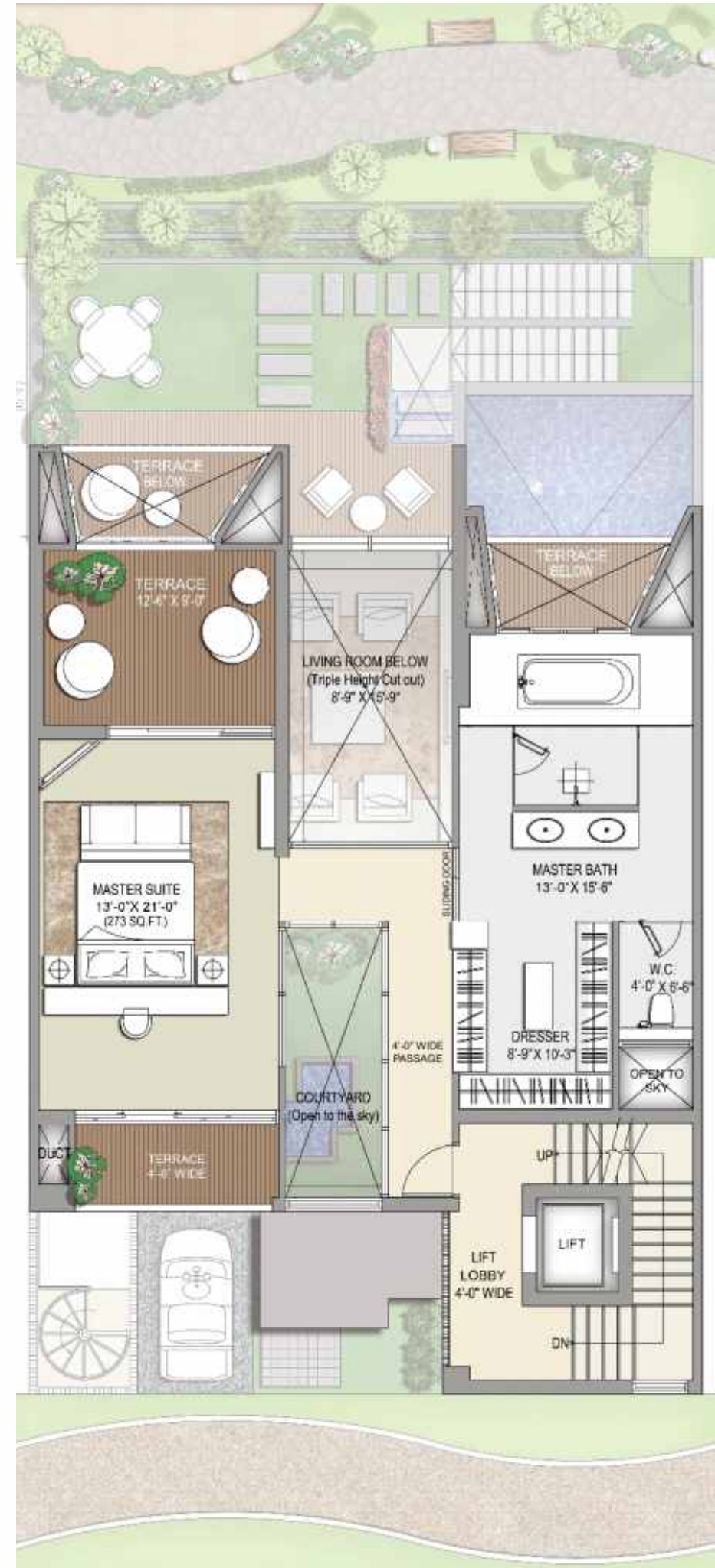
This detailed floor plan shows a 2000 sq. ft. house with a 20'-0" wide common drive way at the bottom. The house features a large private pool (18'-0" x 18'-0") with an open-to-sky area and a deck (6'-0" x 9'-0"). A bedroom (14'-8" x 12'-8", 181 sq. ft.) is located near the pool. The main living area includes a party hall (13'-0" x 22'-3", 290 sq. ft.) with a bar, an entrance foyer, and a lift lobby (4'-0" wide). There are two maid's rooms (6'-6" x 9'-0"), a dresser (5'-3" x 8'-0"), a toilet (8'-3" x 6'-0"), a utility room (5'-0" x 7'-0"), a powder toilet (9'-0" x 4'-0"), and a 3-car parking area. The plan also shows a 20'-0" wide common drive way at the bottom.



FIRST FLOOR



SECOND FLOOR



TERRACE FLOOR



ROOF FLOOR

